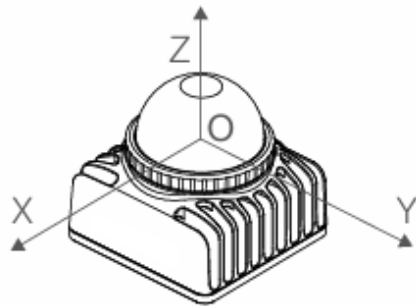
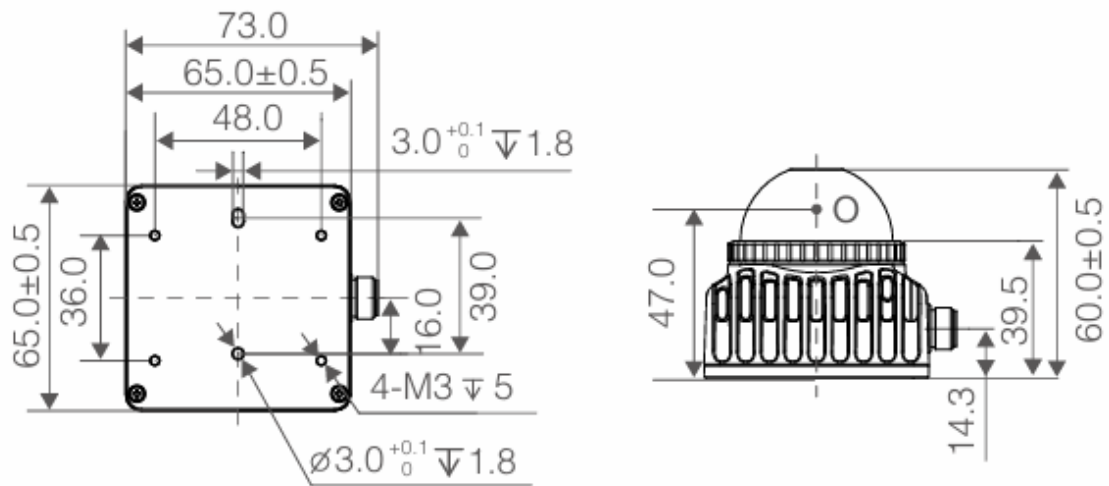




- 360° \*( 59° FOV )
- 0.1m (near blind spot)
- 40m (@ 10% reflectivity)
- 200000 dots per second (dot frequency)
- 65 \* 65 \* 60 (length x width x height (mm))
- 265g (weight)

<b>Performance parameter</b>	
Laser Wavelength	905 nm
Detection Range (@ 100 klx)	40 m @ 10% reflectivity 70 m @ 80% reflectivity
Range Precision(1σ)	≤ 2 cm (@ 10m) ≤ 3 cm (@ 0.2m)
Close Proximity Blind Zone	0.1 m
Angular Precision (1σ )	< 0.15°
Point Rate	200,000 points/s (first return)
Frame Rate	10 Hz (typical)
False Alarm Rate (@ 100 klx)	< 0.01%
<b>Specification</b>	
Laser Safety	Class 1 (IEC60825-1:2014)(Eye Safety)
FOV	Horizontal: 360°, Vertical: -7°~52°
Data Port	100 BASE-TX Ethernet
Data synchronization	IEEE 1588-2008 (PTPv2), GPS
Anti-Interference Function	Available
IMU	Built-in IMU Model: ICM40609
Operating Temperature	-4°F to 131°F (-20°C to 55°C)
IP Rating	IP67
<b>Electrical parameter</b>	
Power	6.5 W (average)
Power Supply Voltage Range	9 ~ 27 V DC
<b>Physical parameter</b>	
Dimensions	65×65×60 mm
Weight	265 g



Unit: mm



[www.atombotix.com](http://www.atombotix.com)  
[contact@atombotix.com](mailto:contact@atombotix.com)

